



**FOTON**  
福田汽车

# 1000万

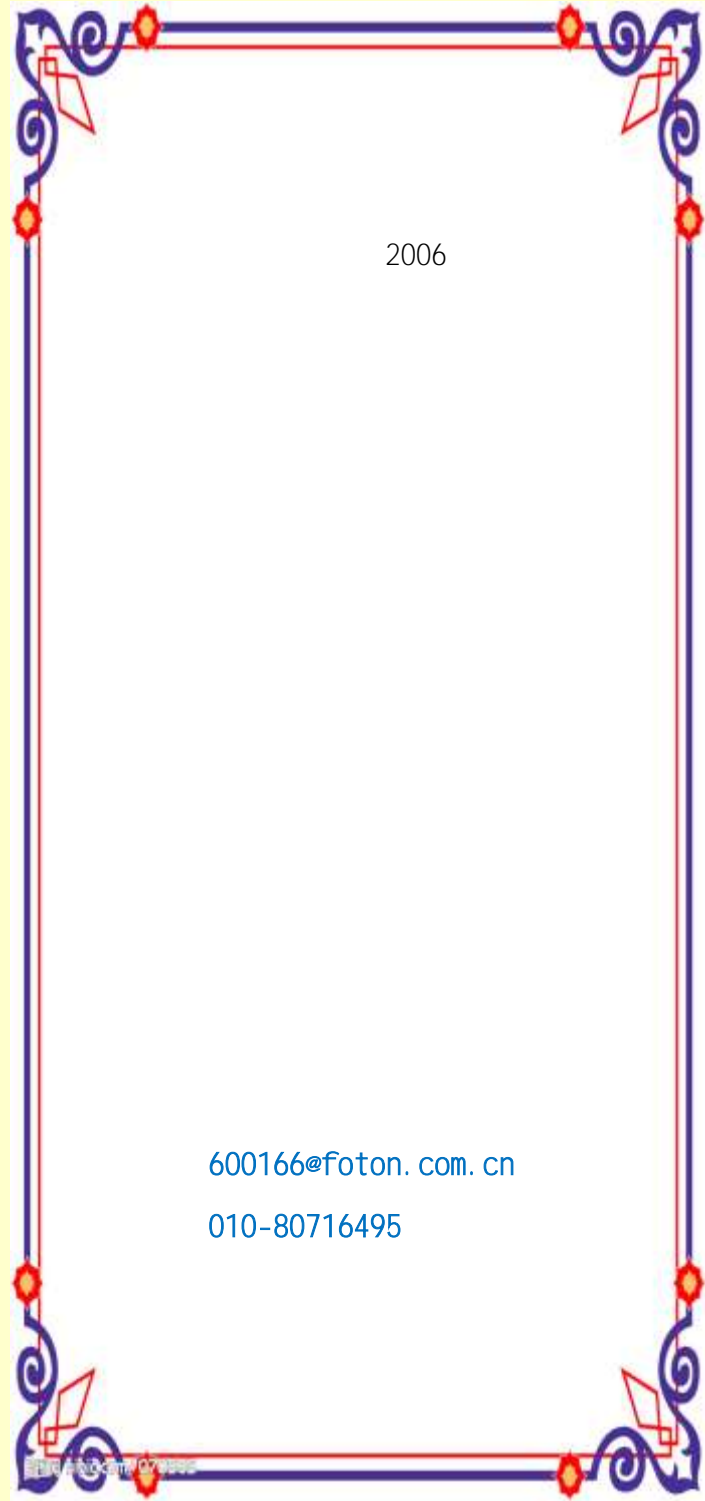


P3

P6

P9 /

P11





K



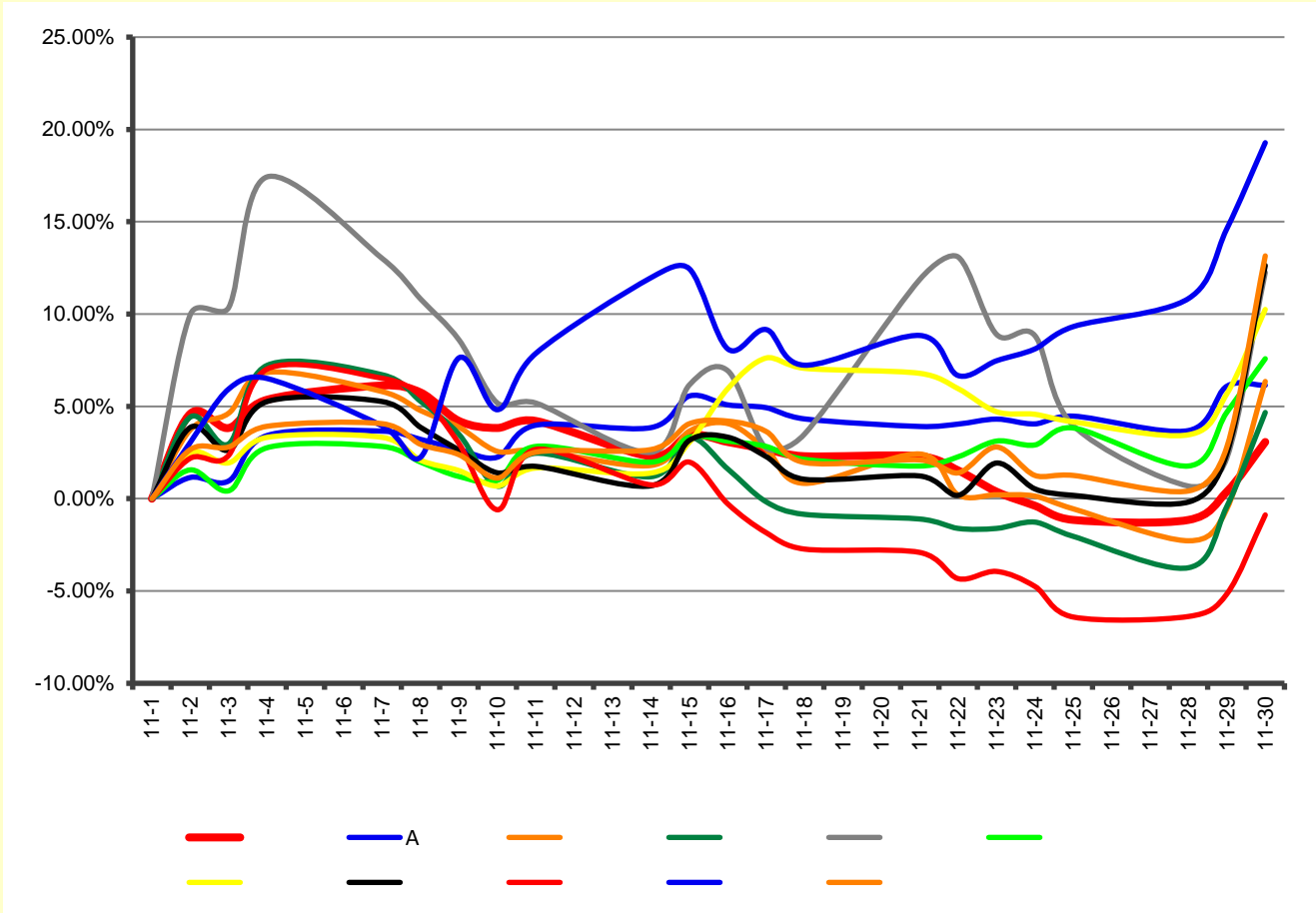
K 11 30



K 11 30

		2022	11	1	-30	2022 11 30		

(11 1 -11 30 )



A



2021

528

1.1

2022 1 10

24%

56%

"

"

"

"

11 17

2022

"

"

" 2025 10

"

2003

2008

2018

515

"

"

"

"

"

"

" 2022

"

" 2022

"

" 2022

"

A

45

4

30

1998

"

"

2022

" "

2016

"

"

G9

" " " "

" "



1		2022-11-15		www.sse.com.cn 2022-113
2		2022-11-16	1 2 3	www.sse.com.cn 2022-114
3		2022-11-22	1 2	www.sse.com.cn 2022-117
4		2022-11-22		www.sse.com.cn 2022-118

1		2022-11-05	2022	www.sse.com.cn
2		2022-11-05	2022 10	www.sse.com.cn 2022-107
3		2022-11-05	2022	www.sse.com.cn 2022-108
4		2022-11-10		www.sse.com.cn 2022-109
5		2022-11-10		www.sse.com.cn 2022-110
6		2022-11-15	2022	www.sse.com.cn 2022-111

7		2022-11-15		www.sse.com.cn 2022-112
8		2022-11-16		www.sse.com.cn 2022-115
9		2022-11-16		www.sse.com.cn 2022-116
10		2022-11-18		www.sse.com.cn
11		2022-11-30		www.sse.com.cn 2022-120



		6748	7110	89451	168848	-47.02%	4485	8134	85287	158043	-46.04%

1.

2.

50 50

3.

4.



11 25

" "

" " " "

" "

" " " " "

" " " " "

" "

" "

EKey

2021

" "

" "

"

"

" " " " " "



12 4

" "

2022

"

"

2022

"

"

" 12. 4"

<http://www.lcab.com.cn/>

2022

"

"

"

"

"

"

"

"

"

"

1.

2.

3.

4.

12 4 10

1

"

"

"

"

2

"

"

"

"

"

"

3

## 学习宣传贯彻党的二十大精神 推动全面贯彻实施宪法



2022年是现行宪法颁布施行40周年 12月4日是第九个国家宪法日

我国现行宪法于1982年12月4日由第五届全国人民代表大会第五次会议通过并公布施行,历经5次修改,内容包括序言、总纲、公民的基本权利与义务、国家机构、国旗国歌国徽首都五个部分,共143条。

中共北京市委全面依法治市委员会守法普法协调小组  
北京市司法局



# 汽车板块动态

10 26

Pre-A

3

GLy

Capital Mirae Asset

2025

2030

2014

2016

LCV

11 30

5.55

B

"

"

A

2021 12

9

A

40

A

2022

11

18

B

B+

IPO

70MPa

11 8

" "

Renaults.a.s.

50%

Horse

50:50

Ampere

100

715.78

2023

IPO

8

8

30

2010 3

18

100%

2017 6

DRB-HICOM

DRB-HICOM

PROTON 49.9%

Lotus 51%

2017 8

2022

11

19

2018

2

90

9.69%

2019 3

smart

50% 2020

11 18

"

"

IPO

2019 -2021

9.29

17.36

44.74

119.42%

25%

150

600

2022

11

20

40.26%

2021

450

4

2180

"

"

"

"

SNE

Research 2022

2.6GWh

160%

SNE Research

2021

297GWh

2020

100%

GGII

2025

1550GWh 2030

3000GWh

2021

92.20%

PSA Stellantis

2021

2022

52.23%

163.37%

0.16%

13.89%

2021

0.06

2022

7.76

2012

2018

2022 6 30

2 360

19.58%

527

36

2021

7.24

90.43%

16.18% 2022

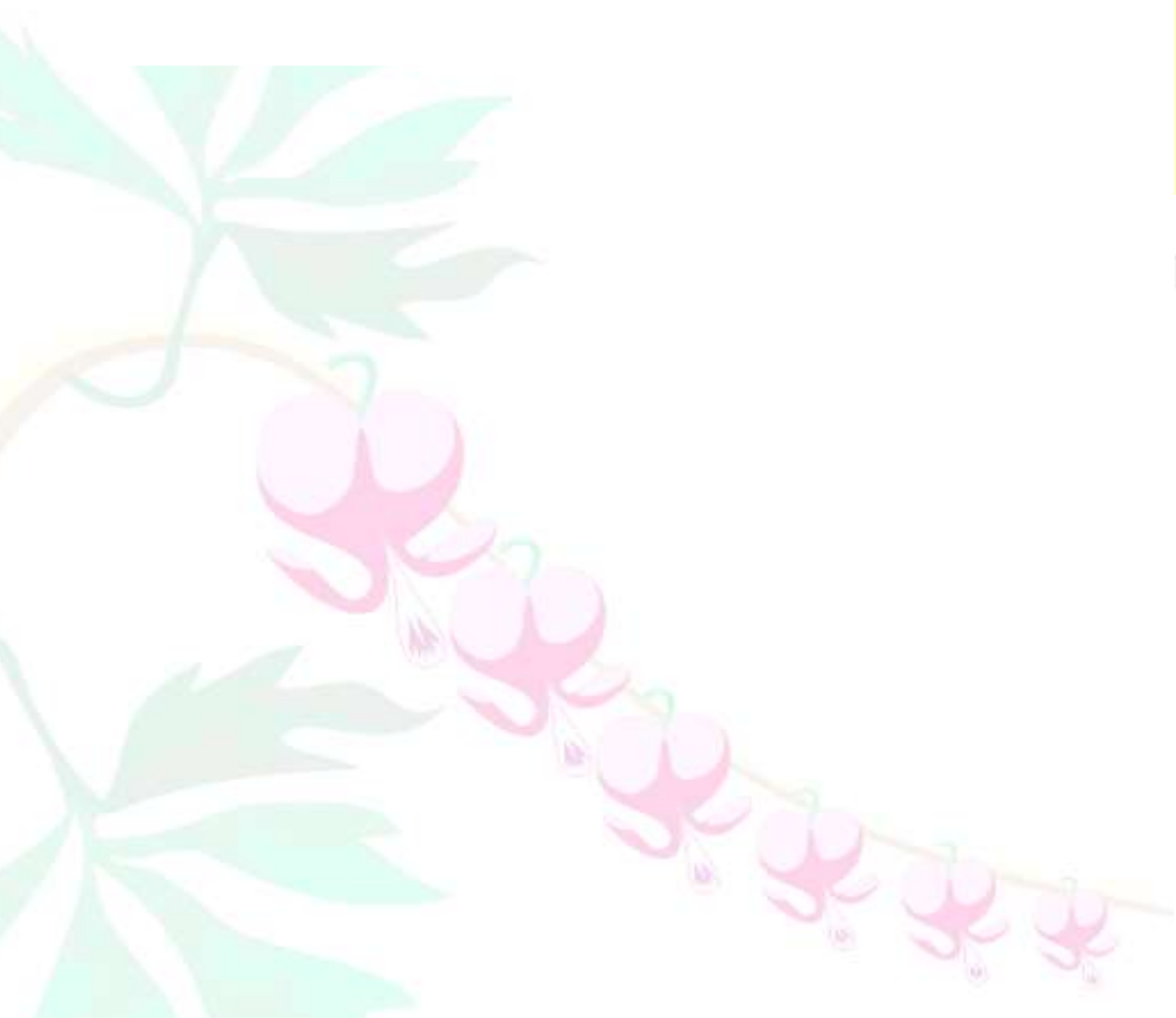
5.72

2021

79%

5%

6 000



2022

11

23

	172640	1370433	129247	1309939	4.62%
	100208	112069	902521	996114	-9.40%
	36004	40010	396109	578215	-31.49%
	219809	78095	1411298	546663	158.17%
	22429	25800	230100	274884	-16.29%
	40505	36761	412217	433277	-4.86%
	13291	13739	147791	399757	-63.03%
	11468	13501	110355	156615	-29.54%
	1519	2649	19617	11752	66.92%
	2884	2242	21843	32206	-32.18%

3

1

	11318	11907	122676	83.01%	339000	-63.81%
	6748	7110	89451	22.58%	168848	-47.02%
	2139	1901	23114	5.61%	45397	-49.08%

2



5

	102225	94954	937824	45.36%	694528	35.03%
	113091	42994	763591	54.11%	303459	151.63%
	70100	416503	24965	1.87%	270863	-90.78%
	5572	13235	90293	10.00%	97966	-7.83%
	8851	1236	51626	12.52%	19788	160.90%
	0	205	50	0.25%	253	-80.24%
	-	-	1035	0.94%	298	247.32%

6

MPV

	17247	14614	182292	8.82%	134040	36.00%
	3015	1000	10717	0.76%	20704	-48.24%
	2237	2831	22747	17.60%	35867	-36.58%





2022 15

2021 8 25

100%

2,566.24

2020

7.73%

2022 4 11 6 22

2020

2.1

2.3

8.1.1

8.1.5

10.2.12

2012 11 27

2.2

3.1.4

3.2.2

16.1

2022 5 18

2021 12 24

7.6

40%

2020

22.2% 2021 12 27

1.5

2022 5 18

2.1.1

2.1.7

2.1.2

4.3.1

4.3.5

4.4.2

13.2.2